

Date: _____

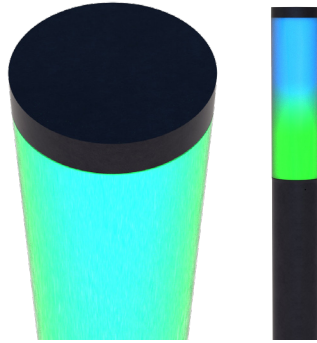
Type: _____

Fixture: _____

Project: _____

Approved:

FCB5500 RGBW



FCB5500 RGBW Exterior die-cast aluminum, 8" nominal diameter, bollard post with a 360° window and impact resistant, UV stabilized, opal diffuser lens, and offered in 2 different heights based on the chosen lens height. RGBW and Tuneable White means color control over 4.6 billion colors. IP65 rated for wet location use.



SPECIFICATIONS

PHYSICAL

lengths/dimensions	fixture diameter: 7-3/8", various heights: 38"H (1ft lens), 50"H (2ft lens)
weight	25 lbs
housing	Marine grade, corrosion resistant, heavy walled, high pressure die-cast aluminum with extruded pole
lens	impact resistant, UV stabilized, opal diffuser
mounting	heavy gauge gravity molded base provides a robust mounting solution with idea flush mounted appearance at the base plate, anchor bolts included (j-box by others)
ingress protection	ETL, U.S. and CA listed for wet location. IP65 Rating.
finish	Six stage chemical iron phosphate conversion pre-treatment. Polyester powder coat finish, 18 µm Min., 5000hr salt spray test (ASTM B117) compliant with Florida / AAMA 2604 specification.

PERFORMANCE

lumen output	1,000 lm per foot @ 100% all on nominal
lifetime	> 70,000 hours / L70 or better
temperature	operating: -13°F to 104°F (-25°C to 40°C) start up: -13°F to 104°F (-25°C to 40°C) storage: -40°F to 176°F (-40°C to 80°C)
ColourQuick	provides uniform beam saturation 3" from fixture surface (1.5" on center from vertical surface)
ColourClone	manufacturing process uses robotic systems to provide 1 SDCM like consistency between luminaires by calibrating every fixture to the same exact X, Y, chromaticity coordinates
ColourSoft	embedded firmware enables 16-bit resolution using only 8-bits of data to enhance the low trim curve for no-flicker at the slowest transition speeds.
ColourMode	RGBW and Tuneable White in one fixture using 6 DMX channels. Channels 1-4 - RGBW : Channels 5-6* - Tuneable White (channel 5 = intensity and channel 6 = CCT) *Tuneable White mode must use the entire fixture as one unit.
warranty	5 year limited warranty (refer to website for details)

ELECTRICAL

input voltage	Universal 120-277VAC, 50/60Hz
power supply	integral Class II, electronic high-power factor 99% @ 120V
controls	SSL ColourSelect 3rd party DMX 512, RDM standard based control system
certification	ETL / cETL, FCC Part 15
standards	UL1598/CSA C22.2 No. 250.0; UI 8750/CSA C22.2 No. 250.13/IES LM-79/LM-80, UL-Class I
power consumption	18W (38"H), 36W (50"H)

Due to continuous development and improvements, specifications are subject to change without notice. FC Lighting reserves the right to change lab test details or specifications without notice. Product use certifies agreement to FC Lighting terms and conditions.